

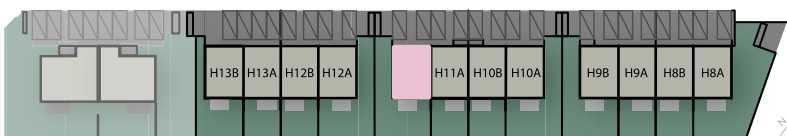
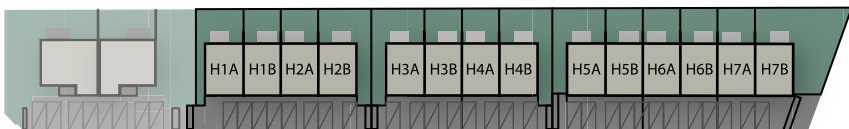
# OSIEDLE BARWNE



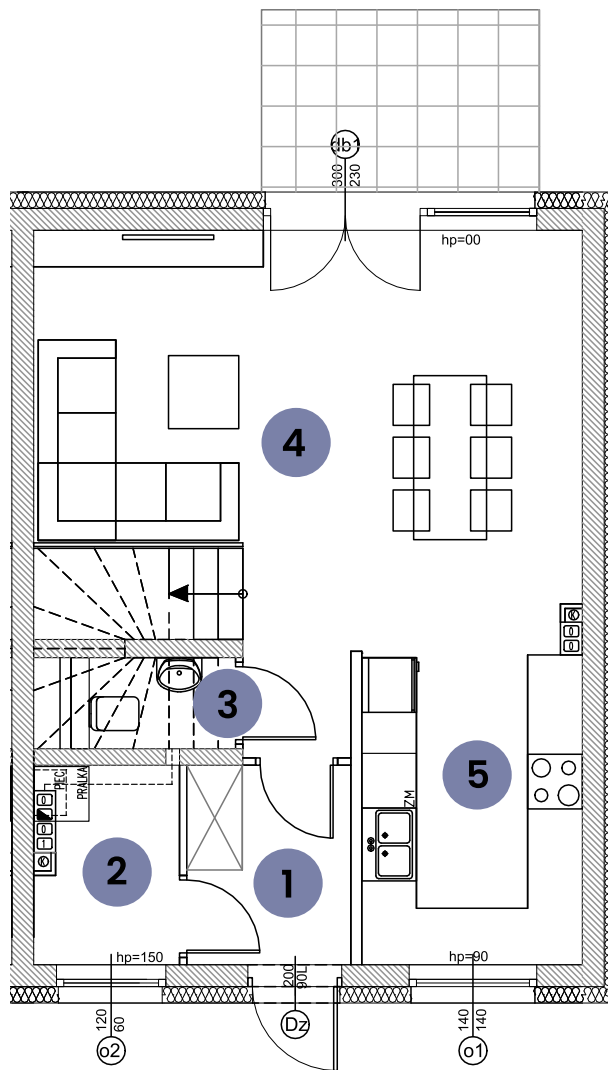
lokal  
**H11B**

powierzchnia użytkowa:  
**83,67 m<sup>2</sup>**

powierzchnia ogrodu:  
**98,00 m<sup>2</sup>**



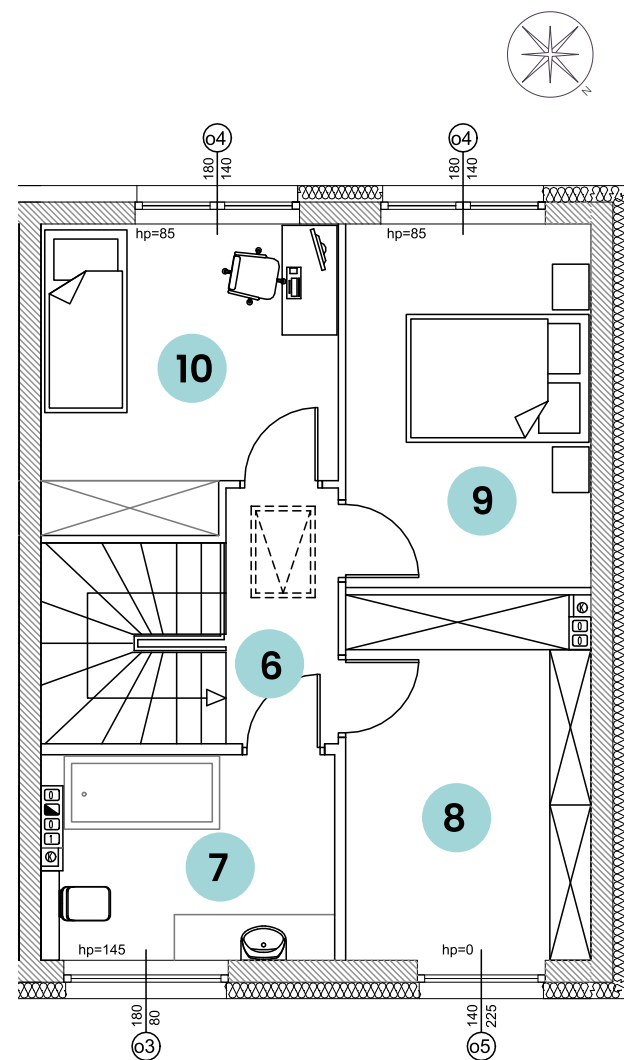
UL. BARWNA



## PARTER

suma **42,52 m<sup>2</sup>**

|   |                         |                      |
|---|-------------------------|----------------------|
| 1 | WIATROLAP               | 3,82 m <sup>2</sup>  |
| 2 | POM. GOSPODARCZE        | 3,17 m <sup>2</sup>  |
| 3 | WC                      | 1,22 m <sup>2</sup>  |
| 4 | POK. DZIENNY Z JADALNIĄ | 25,95 m <sup>2</sup> |
| 5 | KUCHNIA                 | 8,36 m <sup>2</sup>  |



## PIĘTRO

suma **41,15 m<sup>2</sup>**

|    |          |                      |
|----|----------|----------------------|
| 6  | KORYTARZ | 3,32 m <sup>2</sup>  |
| 7  | ŁAZIENKA | 6,83 m <sup>2</sup>  |
| 8  | POKÓJ 1  | 10,58 m <sup>2</sup> |
| 9  | POKÓJ 2  | 10,31 m <sup>2</sup> |
| 10 | POKÓJ 3  | 10,11 m <sup>2</sup> |

